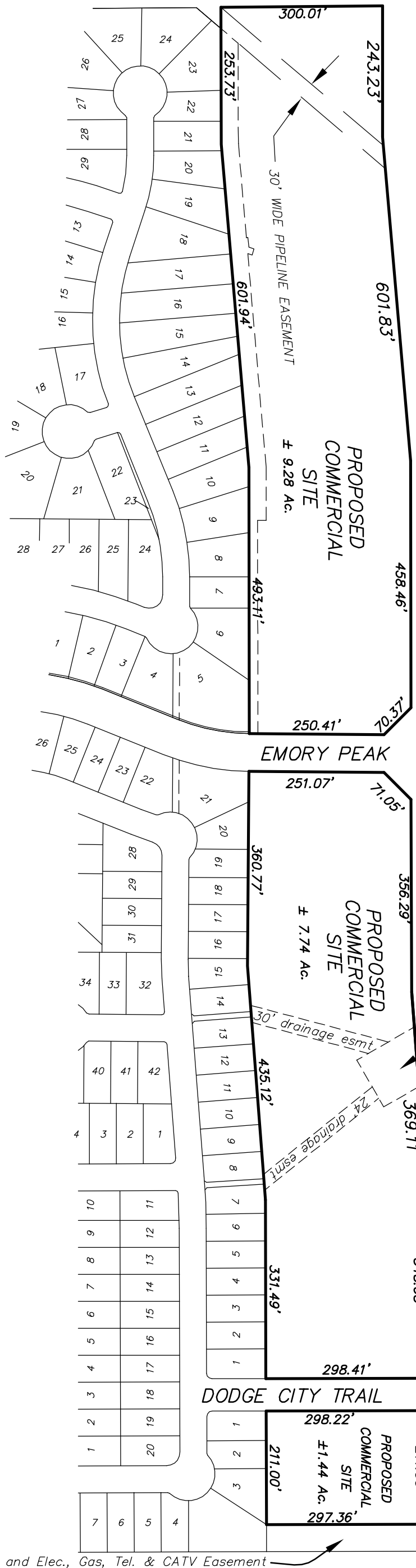


SCALE 1" = 200'

F.M. LOOP 1604
(MIN. 400' R.O.W.)

±0.08 of an Ac
from closure of
Cagnon Rd. Right-of-way.



50' Drainage R.O.W. and Elec., Gas, Tel. & CATV Easement

EXHIBIT SHOWING PROPOSED COMMERCIAL SITES
SEALE SUBDIVISION
BEXAR COUNTY, TEXAS

**OVERBY
DESCAMPS
ENGINEERS**
CIVIL ■ ENVIRONMENTAL ■ SURVEYING

11815 WARFIELD
SAN ANTONIO, TX 78216
Tel: (210) 828-3520
Fax: (210) 828-3599
ode@overbydescamps.com

REVISIONS

PROJECT NO. 044500
DATE 02/28/07
DRAWN BY
CHECKED BY
SHEET 1 OF 1