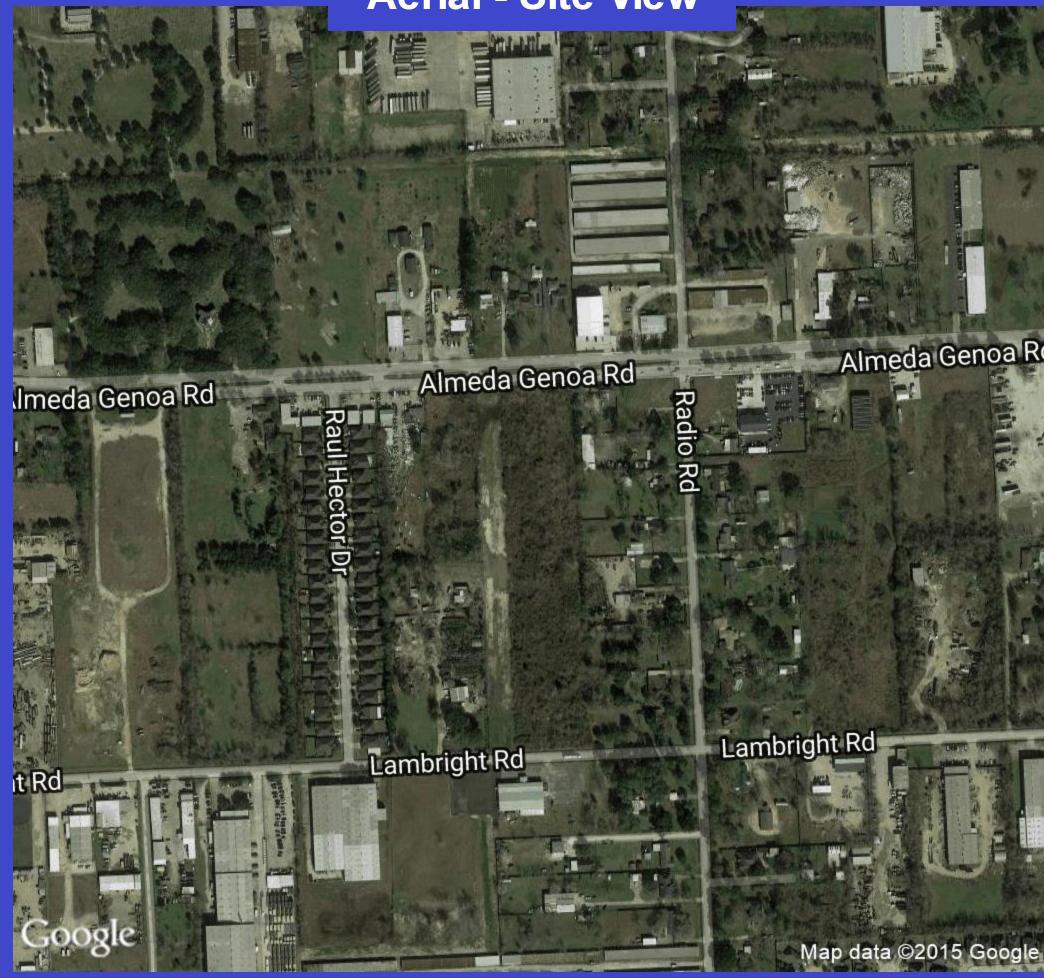
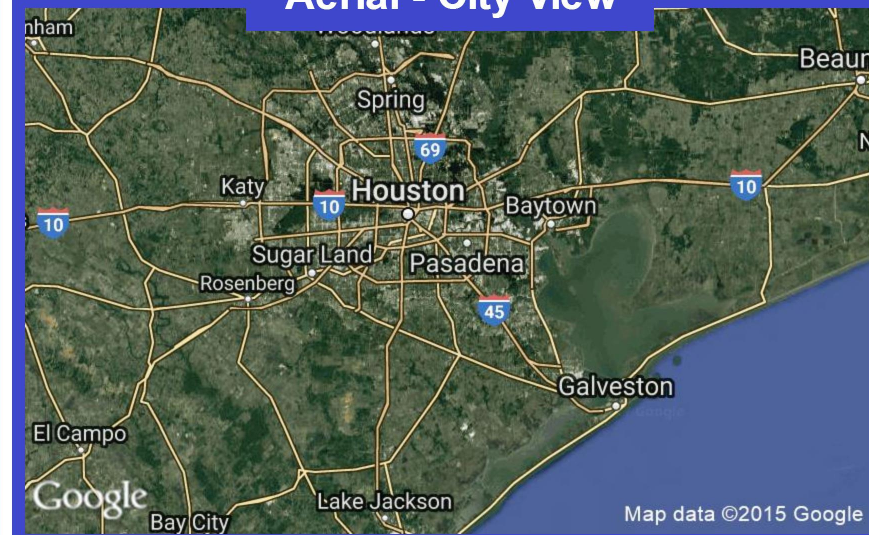


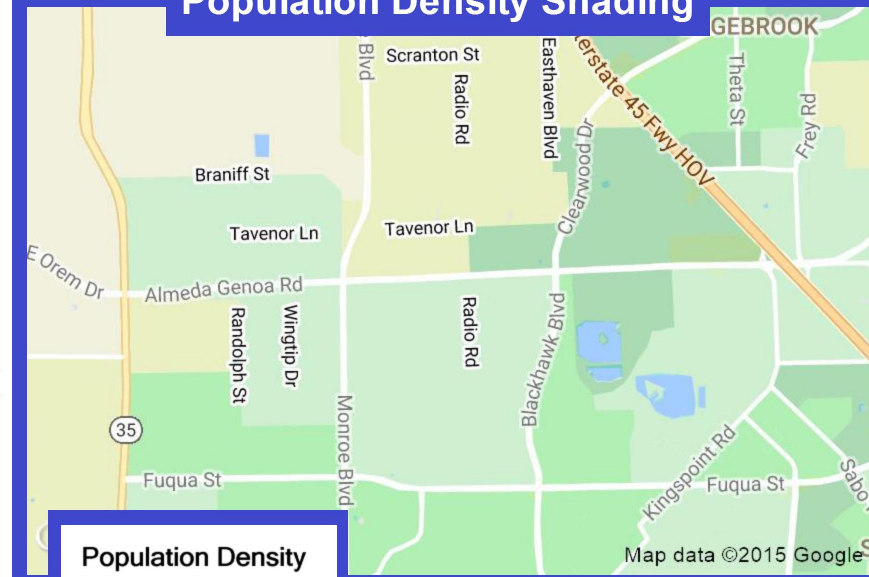
### Aerial - Site View



### Aerial - City View



### Population Density Shading



### Demographic Data

	1 mi radius	3 mi radius	5 mi radius
<b>Population (2017)</b>	11,500	109,196	290,178
<b>Households (2017)</b>	3,611	35,730	95,457
<b>Median household income (2017)</b>	\$57,791	\$54,671	\$55,355
<b>Total Employees</b>	3,016	38,263	82,828
<b>Total Establishments</b>	242	3,188	8,173

### Population Density

By Block Groups

- 7,500 or More
- 5,000 to 7,500
- 2,500 to 5,000
- 1,000 to 2,500
- Less than 1,000

# FULL PROFILE

2000-2010 Census, 2017 Estimates with 2022 Projections

Calculated using Weighted Block Centroid from Block Groups

Lat/Lon: 29.6255/-95.2575

RF1

Almeda Genoa Tract		1 mi radius	3 mi radius	5 mi radius
Houston, TX 77075				
POPULATION	2017 Estimated Population	11,389	108,880	289,834
	2022 Projected Population	12,449	120,211	321,806
	2010 Census Population	10,284	100,488	270,050
	2000 Census Population	5,577	77,158	224,075
	Projected Annual Growth 2017 to 2022	1.9%	2.1%	2.2%
	Historical Annual Growth 2000 to 2017	6.1%	2.4%	1.7%
HOUSEHOLDS	2017 Estimated Households	3,579	35,621	95,354
	2022 Projected Households	3,885	39,153	105,522
	2010 Census Households	3,176	31,890	86,013
	2000 Census Households	1,881	26,635	74,374
	Projected Annual Growth 2017 to 2022	1.7%	2.0%	2.1%
	Historical Annual Growth 2000 to 2017	5.3%	2.0%	1.7%
AGE	2017 Est. Population Under 10 Years	17.3%	16.8%	16.2%
	2017 Est. Population 10 to 19 Years	15.7%	15.3%	15.3%
	2017 Est. Population 20 to 29 Years	17.0%	16.2%	14.9%
	2017 Est. Population 30 to 44 Years	23.7%	22.4%	21.6%
	2017 Est. Population 45 to 59 Years	16.6%	17.0%	17.6%
	2017 Est. Population 60 to 74 Years	7.6%	9.4%	10.7%
	2017 Est. Population 75 Years or Over	2.1%	3.0%	3.7%
	2017 Est. Median Age	29.4	30.5	31.8
MARITAL STATUS & GENDER	2017 Est. Male Population	49.3%	49.7%	49.6%
	2017 Est. Female Population	50.7%	50.3%	50.4%
	2017 Est. Never Married	40.9%	38.4%	36.8%
	2017 Est. Now Married	43.0%	41.6%	42.1%
	2017 Est. Separated or Divorced	14.1%	16.4%	16.7%
	2017 Est. Widowed	2.1%	3.5%	4.3%
INCOME	2017 Est. HH Income \$200,000 or More	2.4%	2.3%	3.2%
	2017 Est. HH Income \$150,000 to \$199,999	7.5%	3.4%	3.9%
	2017 Est. HH Income \$100,000 to \$149,999	10.8%	13.3%	13.4%
	2017 Est. HH Income \$75,000 to \$99,999	12.5%	13.4%	12.8%
	2017 Est. HH Income \$50,000 to \$74,999	22.5%	19.0%	18.7%
	2017 Est. HH Income \$35,000 to \$49,999	15.4%	16.7%	15.5%
	2017 Est. HH Income \$25,000 to \$34,999	8.9%	12.0%	11.2%
	2017 Est. HH Income \$15,000 to \$24,999	9.3%	9.9%	10.4%
	2017 Est. HH Income Under \$15,000	10.7%	10.0%	10.9%
	2017 Est. Average Household Income	\$63,007	\$60,492	\$62,932
	2017 Est. Median Household Income	\$57,831	\$54,673	\$55,377
	2017 Est. Per Capita Income	\$19,802	\$19,792	\$20,728
	2017 Est. Total Businesses	241	3,179	8,164
2017 Est. Total Employees	3,011	38,195	82,768	

This report was produced using data from private and government sources deemed to be reliable. The information herein is provided without representation or warranty.

# FULL PROFILE

2000-2010 Census, 2017 Estimates with 2022 Projections

Calculated using Weighted Block Centroid from Block Groups

Lat/Lon: 29.6255/-95.2575

RF1

Almeda Genoa Tract		1 mi radius	3 mi radius	5 mi radius
Houston, TX 77075				
RACE	2017 Est. White	49.6%	52.1%	55.4%
	2017 Est. Black	15.8%	16.1%	14.7%
	2017 Est. Asian or Pacific Islander	10.4%	6.4%	6.5%
	2017 Est. American Indian or Alaska Native	0.8%	0.7%	0.6%
	2017 Est. Other Races	23.5%	24.7%	22.8%
HISPANIC	2017 Est. Hispanic Population	7,257	68,515	175,602
	2017 Est. Hispanic Population	63.7%	62.9%	60.6%
	2022 Proj. Hispanic Population	64.4%	64.0%	61.4%
	2010 Hispanic Population	66.0%	64.1%	61.0%
EDUCATION (Adults 25 or Older)	2017 Est. Adult Population (25 Years or Over)	6,730	65,252	176,989
	2017 Est. Elementary (Grade Level 0 to 8)	17.4%	16.3%	16.4%
	2017 Est. Some High School (Grade Level 9 to 11)	12.4%	12.4%	12.0%
	2017 Est. High School Graduate	33.5%	30.6%	29.7%
	2017 Est. Some College	16.7%	19.5%	20.3%
	2017 Est. Associate Degree Only	5.0%	6.3%	5.8%
	2017 Est. Bachelor Degree Only	10.8%	10.8%	11.0%
	2017 Est. Graduate Degree	4.3%	4.1%	4.7%
HOUSING	2017 Est. Total Housing Units	3,739	37,375	100,766
	2017 Est. Owner-Occupied	59.4%	50.9%	54.2%
	2017 Est. Renter-Occupied	36.4%	44.4%	40.4%
	2017 Est. Vacant Housing	4.3%	4.7%	5.4%
HOMES BUILT BY YEAR	2010 Homes Built 2005 or later	0.9%	1.1%	1.0%
	2010 Homes Built 2000 to 2004	39.8%	22.8%	19.8%
	2010 Homes Built 1990 to 1999	15.9%	10.1%	9.1%
	2010 Homes Built 1980 to 1989	16.2%	14.6%	13.2%
	2010 Homes Built 1970 to 1979	14.8%	27.7%	25.0%
	2010 Homes Built 1960 to 1969	9.1%	15.6%	15.4%
	2010 Homes Built 1950 to 1959	9.4%	12.6%	16.6%
	2010 Homes Built Before 1949	2.9%	3.0%	5.4%
HOME VALUES	2010 Home Value \$1,000,000 or More	0.8%	1.0%	0.9%
	2010 Home Value \$500,000 to \$999,999	3.4%	3.9%	3.7%
	2010 Home Value \$400,000 to \$499,999	2.1%	2.4%	2.4%
	2010 Home Value \$300,000 to \$399,999	9.7%	4.8%	5.6%
	2010 Home Value \$200,000 to \$299,999	14.0%	10.5%	12.7%
	2010 Home Value \$150,000 to \$199,999	22.8%	15.0%	17.1%
	2010 Home Value \$100,000 to \$149,999	41.1%	38.2%	31.6%
	2010 Home Value \$50,000 to \$99,999	17.8%	27.4%	27.3%
	2010 Home Value \$25,000 to \$49,999	2.2%	2.3%	3.5%
	2010 Home Value Under \$25,000	1.8%	3.0%	3.0%
	2010 Median Home Value	\$143,302	\$124,389	\$130,183
	2010 Median Rent	\$844	\$735	\$739

This report was produced using data from private and government sources deemed to be reliable. The information herein is provided without representation or warranty.

# FULL PROFILE

2000-2010 Census, 2017 Estimates with 2022 Projections

Calculated using Weighted Block Centroid from Block Groups

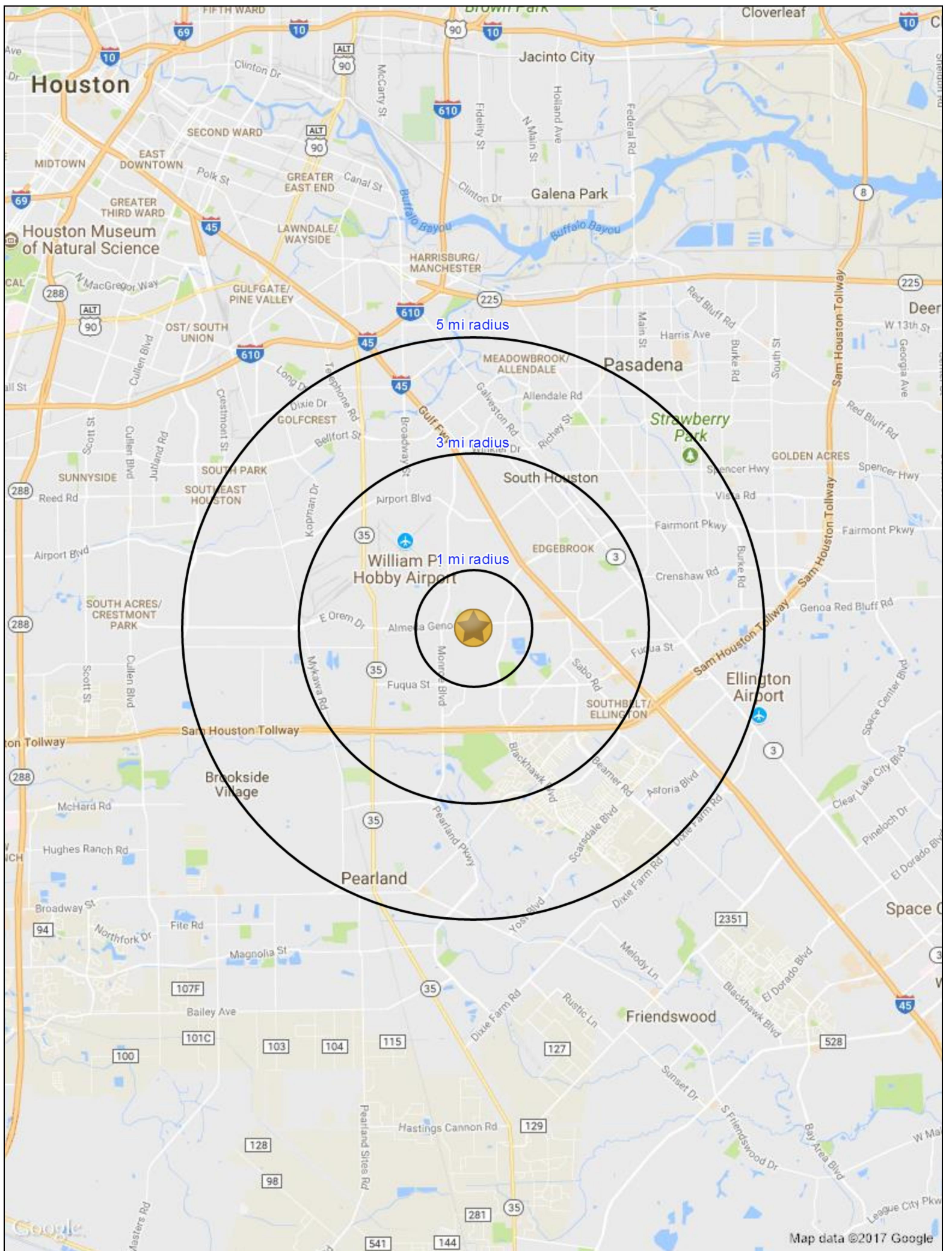
Lat/Lon: 29.6255/-95.2575

RF1

Almeda Genoa Tract		1 mi radius	3 mi radius	5 mi radius
Houston, TX 77075				
LABOR FORCE	2017 Est. Labor Population Age 16 Years or Over	8,317	80,343	215,786
	2017 Est. Civilian Employed	66.9%	64.5%	62.5%
	2017 Est. Civilian Unemployed	2.0%	3.3%	3.7%
	2017 Est. in Armed Forces	-	0.2%	0.1%
	2017 Est. not in Labor Force	31.0%	32.1%	33.7%
	2017 Labor Force Males	48.6%	49.2%	49.1%
	2017 Labor Force Females	51.4%	50.8%	50.9%
OCCUPATION	2010 Occupation: Population Age 16 Years or Over	5,597	51,833	134,333
	2010 Mgmt, Business, & Financial Operations	11.1%	8.8%	9.2%
	2010 Professional, Related	8.9%	11.7%	12.6%
	2010 Service	26.5%	20.2%	19.9%
	2010 Sales, Office	20.5%	23.2%	23.0%
	2010 Farming, Fishing, Forestry	0.5%	0.6%	0.4%
	2010 Construction, Extraction, Maintenance	15.9%	16.5%	16.7%
	2010 Production, Transport, Material Moving	16.7%	19.0%	18.3%
	2010 White Collar Workers	40.4%	43.7%	44.8%
	2010 Blue Collar Workers	59.6%	56.3%	55.2%
TRANSPORTATION TO WORK	2010 Drive to Work Alone	90.6%	81.3%	80.5%
	2010 Drive to Work in Carpool	4.4%	10.5%	11.4%
	2010 Travel to Work by Public Transportation	1.0%	1.8%	1.9%
	2010 Drive to Work on Motorcycle	-	0.1%	0.1%
	2010 Walk or Bicycle to Work	0.3%	1.5%	1.4%
	2010 Other Means	3.0%	3.1%	2.8%
	2010 Work at Home	0.6%	1.7%	1.9%
TRAVEL TIME	2010 Travel to Work in 14 Minutes or Less	16.9%	17.6%	17.4%
	2010 Travel to Work in 15 to 29 Minutes	35.2%	30.6%	31.6%
	2010 Travel to Work in 30 to 59 Minutes	42.4%	39.0%	36.6%
	2010 Travel to Work in 60 Minutes or More	7.5%	10.9%	10.5%
	2010 Average Travel Time to Work	26.7	28.1	27.0
CONSUMER EXPENDITURE	2017 Est. Total Household Expenditure	\$183 M	\$1.77 B	\$4.85 B
	2017 Est. Apparel	\$6.48 M	\$62.0 M	\$170 M
	2017 Est. Contributions, Gifts	\$12.0 M	\$111 M	\$312 M
	2017 Est. Education, Reading	\$6.93 M	\$64.9 M	\$182 M
	2017 Est. Entertainment	\$10.2 M	\$98.7 M	\$271 M
	2017 Est. Food, Beverages, Tobacco	\$28.4 M	\$277 M	\$756 M
	2017 Est. Furnishings, Equipment	\$6.17 M	\$59.5 M	\$164 M
	2017 Est. Health Care, Insurance	\$15.9 M	\$156 M	\$426 M
	2017 Est. Household Operations, Shelter, Utilities	\$56.6 M	\$548 M	\$1.50 B
	2017 Est. Miscellaneous Expenses	\$2.66 M	\$26.3 M	\$71.8 M
	2017 Est. Personal Care	\$2.38 M	\$23.1 M	\$63.3 M
	2017 Est. Transportation	\$35.0 M	\$342 M	\$934 M

This report was produced using data from private and government sources deemed to be reliable. The information herein is provided without representation or warranty.





Houston

Houston Museum of Natural Science

5 mi radius

3 mi radius

William P1 Hobby Airport

Pasadena

Strawberry Park

South Houston

Ellington Airport

Pearland

Friendswood