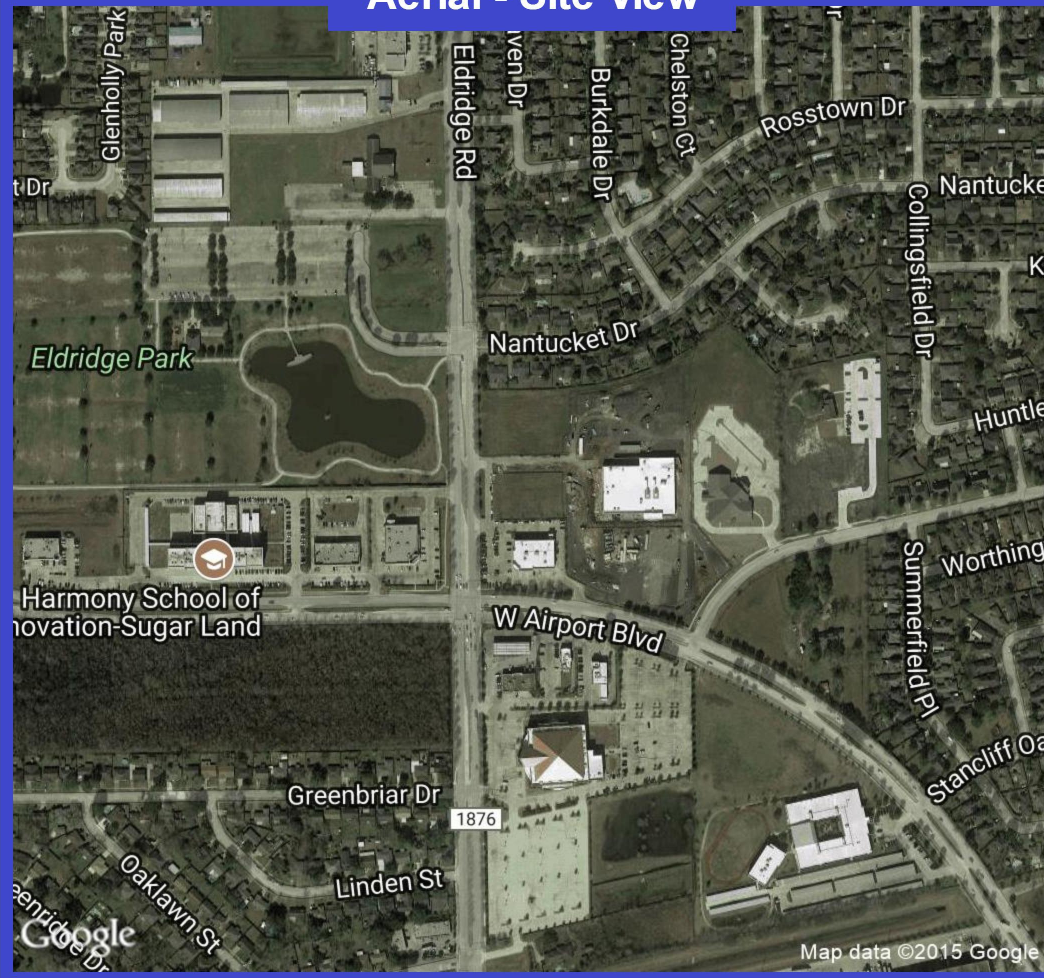


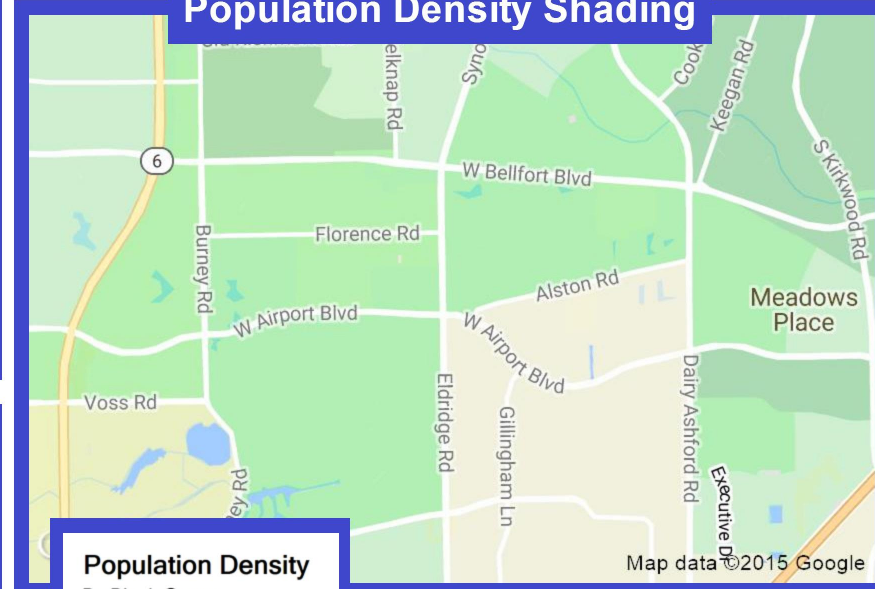
Aerial - Site View



Aerial - City View



Population Density Shading



Demographic Data

	1 mi radius	3 mi radius	5 mi radius
Population (2017)	13,907	135,150	384,644
Households (2017)	4,401	43,551	125,246
Median household income (2017)	\$76,546	\$67,726	\$66,939
Total Employees	4,833	54,376	149,384
Total Establishments	316	4,596	14,088

FULL PROFILE

2000-2010 Census, 2017 Estimates with 2022 Projections

Calculated using Weighted Block Centroid from Block Groups

Lat/Lon: 29.6521/-95.6184

RF1

West Airport		1 mi radius	3 mi radius	5 mi radius
Sugar Land, TX 77478				
POPULATION	2017 Estimated Population	13,907	135,150	384,644
	2022 Projected Population	16,928	158,214	447,966
	2010 Census Population	13,136	125,914	345,449
	2000 Census Population	7,959	99,087	285,853
	Projected Annual Growth 2017 to 2022	4.3%	3.4%	3.3%
	Historical Annual Growth 2000 to 2017	4.4%	2.1%	2.0%
HOUSEHOLDS	2017 Estimated Households	4,401	43,551	125,246
	2022 Projected Households	5,172	49,933	143,162
	2010 Census Households	4,182	40,056	110,794
	2000 Census Households	2,498	32,057	93,795
	Projected Annual Growth 2017 to 2022	3.5%	2.9%	2.9%
	Historical Annual Growth 2000 to 2017	4.5%	2.1%	2.0%
AGE	2017 Est. Population Under 10 Years	13.2%	13.9%	14.4%
	2017 Est. Population 10 to 19 Years	14.7%	15.1%	15.2%
	2017 Est. Population 20 to 29 Years	12.3%	14.2%	14.5%
	2017 Est. Population 30 to 44 Years	20.8%	20.9%	21.5%
	2017 Est. Population 45 to 59 Years	21.2%	20.0%	19.8%
	2017 Est. Population 60 to 74 Years	13.5%	12.1%	11.2%
	2017 Est. Population 75 Years or Over	4.2%	3.7%	3.4%
	2017 Est. Median Age	36.8	34.4	33.8
MARITAL STATUS & GENDER	2017 Est. Male Population	49.2%	49.0%	49.3%
	2017 Est. Female Population	50.8%	51.0%	50.7%
	2017 Est. Never Married	29.8%	35.3%	35.4%
	2017 Est. Now Married	52.2%	46.1%	45.0%
	2017 Est. Separated or Divorced	14.1%	14.4%	15.5%
	2017 Est. Widowed	3.8%	4.2%	4.1%
INCOME	2017 Est. HH Income \$200,000 or More	8.9%	6.8%	7.1%
	2017 Est. HH Income \$150,000 to \$199,999	7.3%	6.4%	6.1%
	2017 Est. HH Income \$100,000 to \$149,999	19.1%	14.9%	14.2%
	2017 Est. HH Income \$75,000 to \$99,999	14.4%	12.1%	11.4%
	2017 Est. HH Income \$50,000 to \$74,999	19.8%	19.0%	17.8%
	2017 Est. HH Income \$35,000 to \$49,999	11.5%	13.8%	13.7%
	2017 Est. HH Income \$25,000 to \$34,999	9.0%	9.5%	9.9%
	2017 Est. HH Income \$15,000 to \$24,999	4.0%	7.9%	9.5%
	2017 Est. HH Income Under \$15,000	6.0%	9.6%	10.3%
	2017 Est. Average Household Income	\$100,005	\$79,077	\$77,591
	2017 Est. Median Household Income	\$76,546	\$67,726	\$66,939
	2017 Est. Per Capita Income	\$31,670	\$25,520	\$25,315
	2017 Est. Total Businesses	316	4,596	14,088
2017 Est. Total Employees	4,833	54,376	149,384	

This report was produced using data from private and government sources deemed to be reliable. The information herein is provided without representation or warranty.

FULL PROFILE

2000-2010 Census, 2017 Estimates with 2022 Projections

Calculated using Weighted Block Centroid from Block Groups

Lat/Lon: 29.6521/-95.6184

RF1

West Airport		1 mi radius	3 mi radius	5 mi radius
Sugar Land, TX 77478				
RACE	2017 Est. White	32.1%	32.3%	33.3%
	2017 Est. Black	11.5%	22.1%	23.5%
	2017 Est. Asian or Pacific Islander	48.1%	31.0%	27.0%
	2017 Est. American Indian or Alaska Native	0.3%	0.5%	0.5%
	2017 Est. Other Races	8.1%	14.1%	15.6%
HISPANIC	2017 Est. Hispanic Population	2,332	40,753	130,206
	2017 Est. Hispanic Population	16.8%	30.2%	33.9%
	2022 Proj. Hispanic Population	17.2%	30.3%	33.9%
	2010 Hispanic Population	17.2%	30.2%	34.4%
EDUCATION (Adults 25 or Older)	2017 Est. Adult Population (25 Years or Over)	9,098	85,946	242,134
	2017 Est. Elementary (Grade Level 0 to 8)	7.3%	10.8%	12.9%
	2017 Est. Some High School (Grade Level 9 to 11)	6.7%	9.1%	8.7%
	2017 Est. High School Graduate	20.6%	22.6%	22.0%
	2017 Est. Some College	23.2%	21.2%	20.1%
	2017 Est. Associate Degree Only	5.8%	6.1%	6.0%
	2017 Est. Bachelor Degree Only	25.2%	20.5%	19.9%
	2017 Est. Graduate Degree	11.3%	9.8%	10.5%
HOUSING	2017 Est. Total Housing Units	4,473	45,195	130,754
	2017 Est. Owner-Occupied	76.2%	61.5%	55.4%
	2017 Est. Renter-Occupied	22.2%	34.8%	40.4%
	2017 Est. Vacant Housing	1.6%	3.6%	4.2%
HOMES BUILT BY YEAR	2010 Homes Built 2005 or later	0.5%	1.1%	1.2%
	2010 Homes Built 2000 to 2004	33.4%	23.4%	20.3%
	2010 Homes Built 1990 to 1999	17.8%	19.4%	19.4%
	2010 Homes Built 1980 to 1989	28.6%	29.5%	28.5%
	2010 Homes Built 1970 to 1979	18.7%	24.5%	29.0%
	2010 Homes Built 1960 to 1969	2.0%	4.4%	5.5%
	2010 Homes Built 1950 to 1959	0.8%	2.1%	2.1%
	2010 Homes Built Before 1949	0.8%	1.5%	1.3%
HOME VALUES	2010 Home Value \$1,000,000 or More	0.2%	0.6%	0.7%
	2010 Home Value \$500,000 to \$999,999	2.9%	5.3%	5.5%
	2010 Home Value \$400,000 to \$499,999	3.5%	4.2%	4.9%
	2010 Home Value \$300,000 to \$399,999	10.0%	9.3%	11.2%
	2010 Home Value \$200,000 to \$299,999	32.6%	21.9%	21.2%
	2010 Home Value \$150,000 to \$199,999	21.7%	18.0%	17.5%
	2010 Home Value \$100,000 to \$149,999	25.7%	26.9%	26.5%
	2010 Home Value \$50,000 to \$99,999	6.7%	17.1%	17.4%
	2010 Home Value \$25,000 to \$49,999	1.5%	1.9%	2.3%
	2010 Home Value Under \$25,000	1.3%	1.6%	1.9%
	2010 Median Home Value	\$194,932	\$176,030	\$175,968
	2010 Median Rent	\$1,091	\$917	\$848

This report was produced using data from private and government sources deemed to be reliable. The information herein is provided without representation or warranty.

FULL PROFILE

2000-2010 Census, 2017 Estimates with 2022 Projections

Calculated using Weighted Block Centroid from Block Groups

Lat/Lon: 29.6521/-95.6184

RF1

West Airport		1 mi radius	3 mi radius	5 mi radius
Sugar Land, TX 77478				
LABOR FORCE	2017 Est. Labor Population Age 16 Years or Over	10,836	103,947	293,852
	2017 Est. Civilian Employed	64.7%	62.6%	64.0%
	2017 Est. Civilian Unemployed	3.8%	3.8%	4.2%
	2017 Est. in Armed Forces	-	-	-
	2017 Est. not in Labor Force	31.5%	33.6%	31.8%
	2017 Labor Force Males	47.9%	48.2%	48.6%
	2017 Labor Force Females	52.1%	51.8%	51.4%
OCCUPATION	2010 Occupation: Population Age 16 Years or Over	7,006	64,895	184,974
	2010 Mgmt, Business, & Financial Operations	16.9%	13.5%	12.9%
	2010 Professional, Related	24.0%	19.3%	19.2%
	2010 Service	14.0%	19.3%	21.2%
	2010 Sales, Office	32.6%	26.6%	24.4%
	2010 Farming, Fishing, Forestry	-	0.2%	0.2%
	2010 Construction, Extraction, Maintenance	4.2%	8.7%	10.5%
	2010 Production, Transport, Material Moving	8.3%	12.5%	11.5%
	2010 White Collar Workers	73.4%	59.3%	56.5%
	2010 Blue Collar Workers	26.6%	40.7%	43.5%
	TRANSPORTATION TO WORK	2010 Drive to Work Alone	82.1%	82.2%
2010 Drive to Work in Carpool		10.6%	11.2%	13.1%
2010 Travel to Work by Public Transportation		2.3%	2.6%	2.8%
2010 Drive to Work on Motorcycle		-	-	-
2010 Walk or Bicycle to Work		0.1%	0.7%	0.9%
2010 Other Means		0.3%	0.4%	0.7%
2010 Work at Home		4.6%	2.9%	3.4%
TRAVEL TIME		2010 Travel to Work in 14 Minutes or Less	14.6%	14.7%
	2010 Travel to Work in 15 to 29 Minutes	38.5%	32.5%	32.1%
	2010 Travel to Work in 30 to 59 Minutes	44.2%	42.8%	43.3%
	2010 Travel to Work in 60 Minutes or More	7.2%	10.0%	10.7%
	2010 Average Travel Time to Work	27.4	28.6	28.9
CONSUMER EXPENDITURE	2017 Est. Total Household Expenditure	\$309 M	\$2.58 B	\$7.29 B
	2017 Est. Apparel	\$10.9 M	\$91.0 M	\$257 M
	2017 Est. Contributions, Gifts	\$22.1 M	\$180 M	\$511 M
	2017 Est. Education, Reading	\$12.8 M	\$104 M	\$297 M
	2017 Est. Entertainment	\$17.5 M	\$145 M	\$410 M
	2017 Est. Food, Beverages, Tobacco	\$46.6 M	\$393 M	\$1.11 B
	2017 Est. Furnishings, Equipment	\$10.9 M	\$89.0 M	\$251 M
	2017 Est. Health Care, Insurance	\$26.1 M	\$221 M	\$624 M
	2017 Est. Household Operations, Shelter, Utilities	\$95.3 M	\$798 M	\$2.26 B
	2017 Est. Miscellaneous Expenses	\$4.47 M	\$37.4 M	\$106 M
	2017 Est. Personal Care	\$3.98 M	\$33.4 M	\$94.4 M
	2017 Est. Transportation	\$58.4 M	\$487 M	\$1.37 B

This report was produced using data from private and government sources deemed to be reliable. The information herein is provided without representation or warranty.

