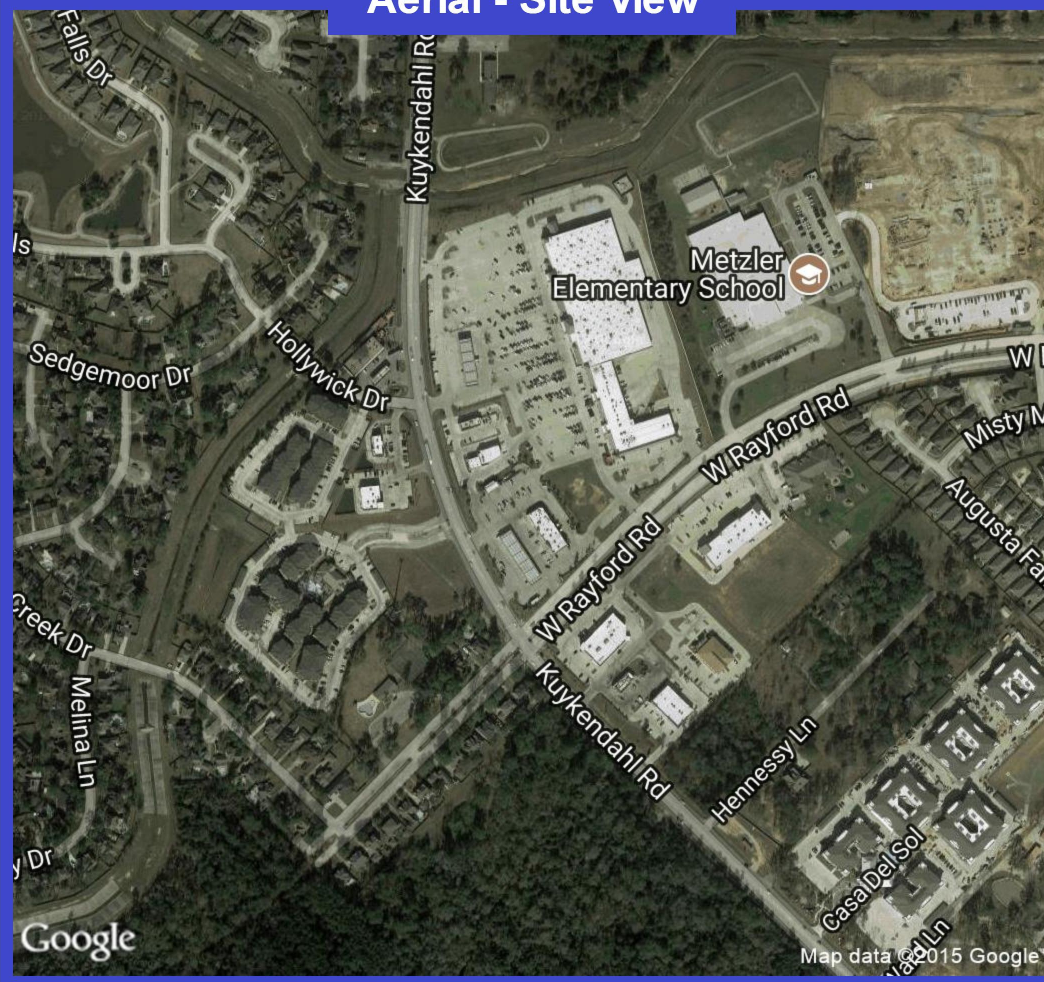
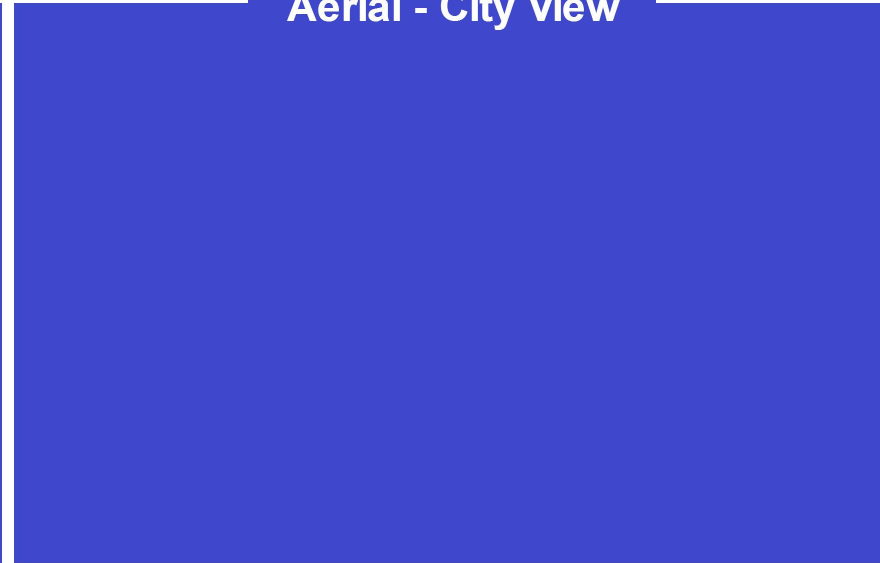


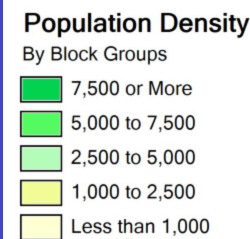
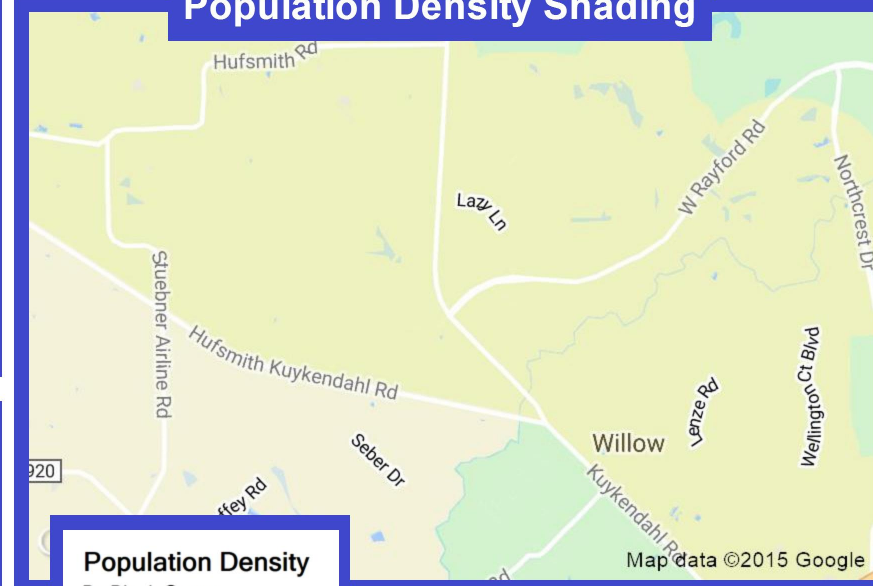
Aerial - Site View



Aerial - City View



Population Density Shading



Demographic Data

	1 mi radius	3 mi radius	5 mi radius
Population (2017)	9,679	56,718	138,853
Households (2017)	3,417	19,100	48,889
Median household income (2017)	\$98,941	\$108,467	\$99,093
Total Employees	1,106	6,362	28,211
Total Establishments	217	887	3,645

FULL PROFILE

2000-2010 Census, 2017 Estimates with 2022 Projections

Calculated using Weighted Block Centroid from Block Groups

Lat/Lon: 30.1128/-95.5528

RF1

24101 Kuykendahl Rd, Spring, TX 77389

1 mi radius 3 mi radius 5 mi radius

	1 mi radius	3 mi radius	5 mi radius	
POPULATION	2017 Estimated Population	9,679	57,017	138,949
	2022 Projected Population	10,610	62,145	153,793
	2010 Census Population	4,987	28,769	97,021
	2000 Census Population	2,651	13,816	53,478
	Projected Annual Growth 2017 to 2022	1.9%	1.8%	2.1%
	Historical Annual Growth 2000 to 2017	15.6%	18.4%	9.4%
HOUSEHOLDS	2017 Estimated Households	3,417	19,197	48,933
	2022 Projected Households	3,739	20,892	53,915
	2010 Census Households	1,687	9,322	33,735
	2000 Census Households	849	4,437	18,885
	Projected Annual Growth 2017 to 2022	1.9%	1.8%	2.0%
	Historical Annual Growth 2000 to 2017	17.8%	19.6%	9.4%
AGE	2017 Est. Population Under 10 Years	14.6%	15.0%	15.0%
	2017 Est. Population 10 to 19 Years	14.1%	13.7%	14.1%
	2017 Est. Population 20 to 29 Years	10.6%	11.9%	11.4%
	2017 Est. Population 30 to 44 Years	23.1%	23.6%	22.7%
	2017 Est. Population 45 to 59 Years	20.7%	19.5%	19.4%
	2017 Est. Population 60 to 74 Years	13.4%	12.5%	12.4%
	2017 Est. Population 75 Years or Over	3.6%	3.7%	5.0%
	2017 Est. Median Age	36.1	35.0	35.9
MARITAL STATUS & GENDER	2017 Est. Male Population	49.4%	48.9%	48.4%
	2017 Est. Female Population	50.6%	51.1%	51.6%
	2017 Est. Never Married	22.9%	21.8%	22.7%
	2017 Est. Now Married	59.1%	65.6%	60.0%
	2017 Est. Separated or Divorced	14.4%	10.5%	13.6%
	2017 Est. Widowed	3.6%	2.1%	3.7%
INCOME	2017 Est. HH Income \$200,000 or More	12.2%	18.1%	16.8%
	2017 Est. HH Income \$150,000 to \$199,999	12.1%	11.9%	10.4%
	2017 Est. HH Income \$100,000 to \$149,999	25.0%	23.7%	20.1%
	2017 Est. HH Income \$75,000 to \$99,999	13.3%	13.2%	13.4%
	2017 Est. HH Income \$50,000 to \$74,999	15.7%	14.3%	14.2%
	2017 Est. HH Income \$35,000 to \$49,999	8.4%	7.0%	8.7%
	2017 Est. HH Income \$25,000 to \$34,999	4.4%	4.4%	6.2%
	2017 Est. HH Income \$15,000 to \$24,999	3.7%	3.2%	4.8%
	2017 Est. HH Income Under \$15,000	5.3%	4.2%	5.5%
	2017 Est. Average Household Income	\$126,781	\$130,987	\$121,680
	2017 Est. Median Household Income	\$98,941	\$108,522	\$99,080
	2017 Est. Per Capita Income	\$44,761	\$44,101	\$42,879
	2017 Est. Total Businesses	217	900	3,629
2017 Est. Total Employees	1,106	6,446	28,057	

This report was produced using data from private and government sources deemed to be reliable. The information herein is provided without representation or warranty.

FULL PROFILE

2000-2010 Census, 2017 Estimates with 2022 Projections

Calculated using Weighted Block Centroid from Block Groups

Lat/Lon: 30.1128/-95.5528

RF1

24101 Kuykendahl Rd, Spring, TX 77389

1 mi radius 3 mi radius 5 mi radius

	1 mi radius	3 mi radius	5 mi radius	
RACE	2017 Est. White	78.6%	77.1%	76.5%
	2017 Est. Black	7.7%	7.5%	7.3%
	2017 Est. Asian or Pacific Islander	3.6%	5.0%	5.9%
	2017 Est. American Indian or Alaska Native	0.6%	0.6%	0.5%
	2017 Est. Other Races	9.5%	9.8%	9.8%
HISPANIC	2017 Est. Hispanic Population	1,983	12,428	30,107
	2017 Est. Hispanic Population	20.5%	21.8%	21.7%
	2022 Proj. Hispanic Population	23.0%	24.1%	23.5%
	2010 Hispanic Population	17.5%	20.6%	18.7%
EDUCATION (Adults 25 or Older)	2017 Est. Adult Population (25 Years or Over)	6,473	37,760	91,371
	2017 Est. Elementary (Grade Level 0 to 8)	1.7%	2.8%	2.5%
	2017 Est. Some High School (Grade Level 9 to 11)	4.2%	4.3%	4.1%
	2017 Est. High School Graduate	21.5%	19.9%	20.9%
	2017 Est. Some College	25.4%	20.6%	21.1%
	2017 Est. Associate Degree Only	6.8%	6.5%	6.9%
	2017 Est. Bachelor Degree Only	30.0%	31.6%	29.8%
	2017 Est. Graduate Degree	10.4%	14.3%	14.8%
HOUSING	2017 Est. Total Housing Units	3,502	19,816	50,506
	2017 Est. Owner-Occupied	83.7%	83.8%	75.7%
	2017 Est. Renter-Occupied	13.9%	13.1%	21.2%
	2017 Est. Vacant Housing	2.4%	3.1%	3.1%
HOMES BUILT BY YEAR	2010 Homes Built 2005 or later	8.8%	6.4%	3.1%
	2010 Homes Built 2000 to 2004	89.7%	87.4%	57.9%
	2010 Homes Built 1990 to 1999	40.5%	30.1%	22.1%
	2010 Homes Built 1980 to 1989	27.1%	12.5%	20.9%
	2010 Homes Built 1970 to 1979	23.5%	20.5%	15.7%
	2010 Homes Built 1960 to 1969	12.5%	10.2%	5.9%
	2010 Homes Built 1950 to 1959	2.2%	3.4%	2.3%
	2010 Homes Built Before 1949	3.1%	2.4%	2.0%
HOME VALUES	2010 Home Value \$1,000,000 or More	2.7%	2.8%	1.9%
	2010 Home Value \$500,000 to \$999,999	19.8%	20.4%	14.8%
	2010 Home Value \$400,000 to \$499,999	9.4%	13.1%	9.2%
	2010 Home Value \$300,000 to \$399,999	16.4%	23.1%	16.4%
	2010 Home Value \$200,000 to \$299,999	52.5%	40.6%	29.3%
	2010 Home Value \$150,000 to \$199,999	64.2%	41.7%	29.4%
	2010 Home Value \$100,000 to \$149,999	48.9%	35.0%	25.8%
	2010 Home Value \$50,000 to \$99,999	18.7%	13.2%	11.3%
	2010 Home Value \$25,000 to \$49,999	2.1%	3.7%	2.8%
	2010 Home Value Under \$25,000	4.1%	5.6%	3.4%
	2010 Median Home Value	\$181,788	\$211,985	\$223,956
	2010 Median Rent	\$1,356	\$1,440	\$1,133

This report was produced using data from private and government sources deemed to be reliable. The information herein is provided without representation or warranty.

FULL PROFILE

2000-2010 Census, 2017 Estimates with 2022 Projections

Calculated using Weighted Block Centroid from Block Groups

Lat/Lon: 30.1128/-95.5528

RF1

24101 Kuykendahl Rd, Spring, TX 77389

1 mi radius 3 mi radius 5 mi radius

		1 mi radius	3 mi radius	5 mi radius
LABOR FORCE	2017 Est. Labor Population Age 16 Years or Over	7,412	43,461	105,499
	2017 Est. Civilian Employed	66.8%	65.4%	64.9%
	2017 Est. Civilian Unemployed	2.4%	2.3%	2.3%
	2017 Est. in Armed Forces	-	-	0.1%
	2017 Est. not in Labor Force	30.8%	32.3%	32.8%
	2017 Labor Force Males	49.0%	48.5%	47.5%
	2017 Labor Force Females	51.0%	51.5%	52.5%
OCCUPATION	2010 Occupation: Population Age 16 Years or Over	5,922	28,740	68,470
	2010 Mgmt, Business, & Financial Operations	18.8%	23.2%	23.2%
	2010 Professional, Related	24.5%	23.6%	24.0%
	2010 Service	6.8%	10.0%	11.2%
	2010 Sales, Office	30.7%	27.1%	25.8%
	2010 Farming, Fishing, Forestry	0.2%	0.1%	0.1%
	2010 Construction, Extraction, Maintenance	7.6%	7.1%	6.9%
	2010 Production, Transport, Material Moving	11.4%	8.9%	8.8%
	2010 White Collar Workers	74.0%	73.9%	73.0%
	2010 Blue Collar Workers	26.0%	26.1%	27.0%
	TRANSPORTATION TO WORK	2010 Drive to Work Alone	83.6%	84.7%
2010 Drive to Work in Carpool		7.2%	6.2%	7.3%
2010 Travel to Work by Public Transportation		0.6%	1.4%	1.5%
2010 Drive to Work on Motorcycle		-	-	0.1%
2010 Walk or Bicycle to Work		1.1%	0.8%	1.3%
2010 Other Means		1.1%	1.0%	0.9%
2010 Work at Home		6.4%	5.9%	5.4%
TRAVEL TIME		2010 Travel to Work in 14 Minutes or Less	12.4%	12.4%
	2010 Travel to Work in 15 to 29 Minutes	32.8%	28.3%	30.0%
	2010 Travel to Work in 30 to 59 Minutes	43.7%	41.9%	38.3%
	2010 Travel to Work in 60 Minutes or More	15.2%	19.8%	18.4%
	2010 Average Travel Time to Work	30.6	31.9	30.0
CONSUMER EXPENDITURE	2017 Est. Total Household Expenditure	\$288 M	\$1.62 B	\$3.94 B
	2017 Est. Apparel	\$10.1 M	\$57.5 M	\$139 M
	2017 Est. Contributions, Gifts	\$22.0 M	\$129 M	\$311 M
	2017 Est. Education, Reading	\$12.7 M	\$74.5 M	\$178 M
	2017 Est. Entertainment	\$16.4 M	\$92.7 M	\$224 M
	2017 Est. Food, Beverages, Tobacco	\$42.3 M	\$236 M	\$576 M
	2017 Est. Furnishings, Equipment	\$10.3 M	\$58.6 M	\$141 M
	2017 Est. Health Care, Insurance	\$23.9 M	\$132 M	\$325 M
	2017 Est. Household Operations, Shelter, Utilities	\$88.8 M	\$501 M	\$1.22 B
	2017 Est. Miscellaneous Expenses	\$4.10 M	\$22.7 M	\$55.4 M
	2017 Est. Personal Care	\$3.70 M	\$20.8 M	\$50.6 M
	2017 Est. Transportation	\$53.2 M	\$296 M	\$720 M

This report was produced using data from private and government sources deemed to be reliable. The information herein is provided without representation or warranty.

