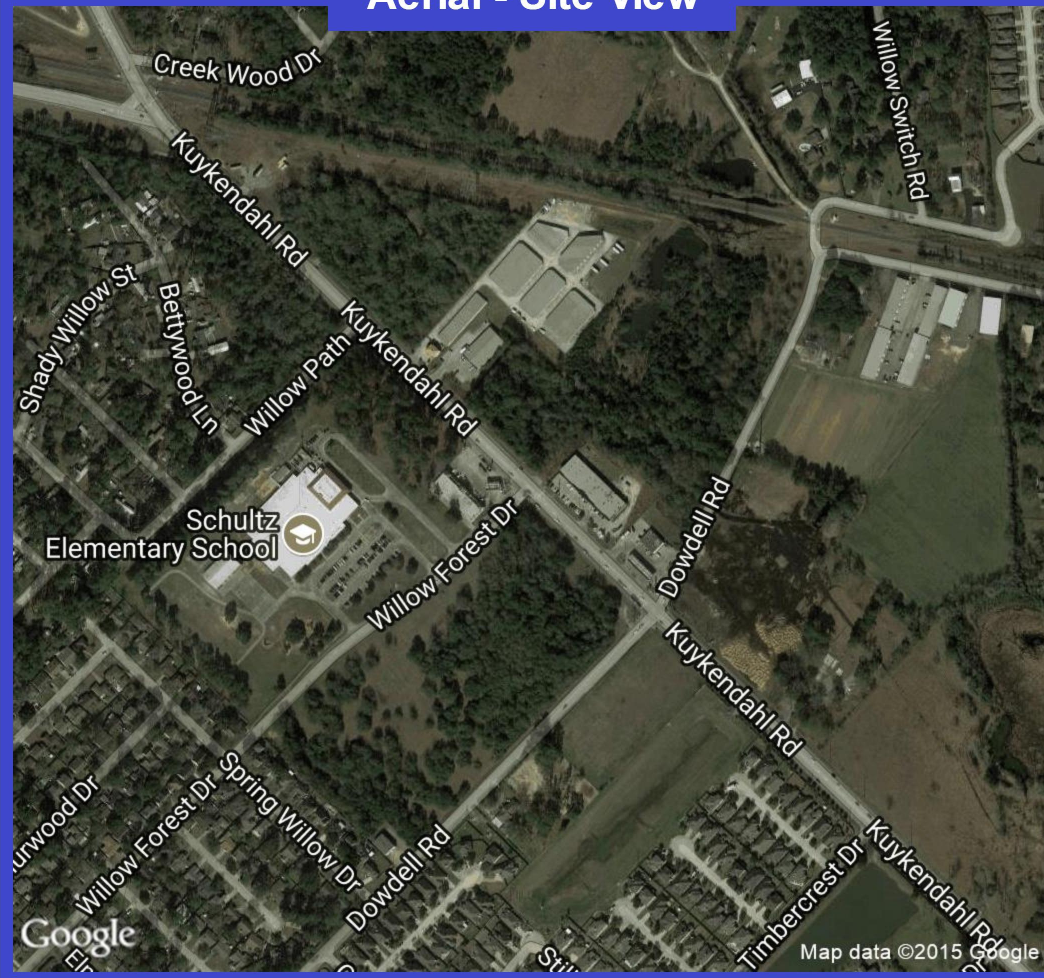


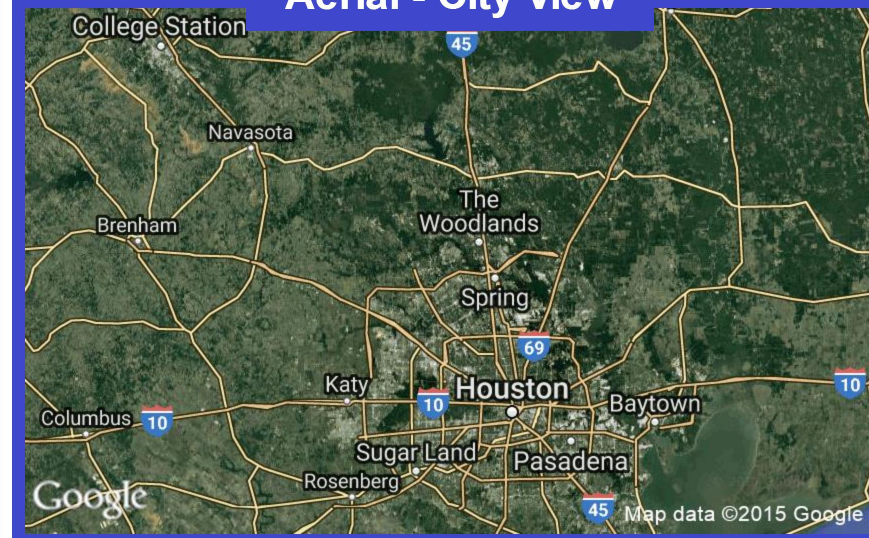
Kuykendahl Rd & Willow Forest Dr

Tomball

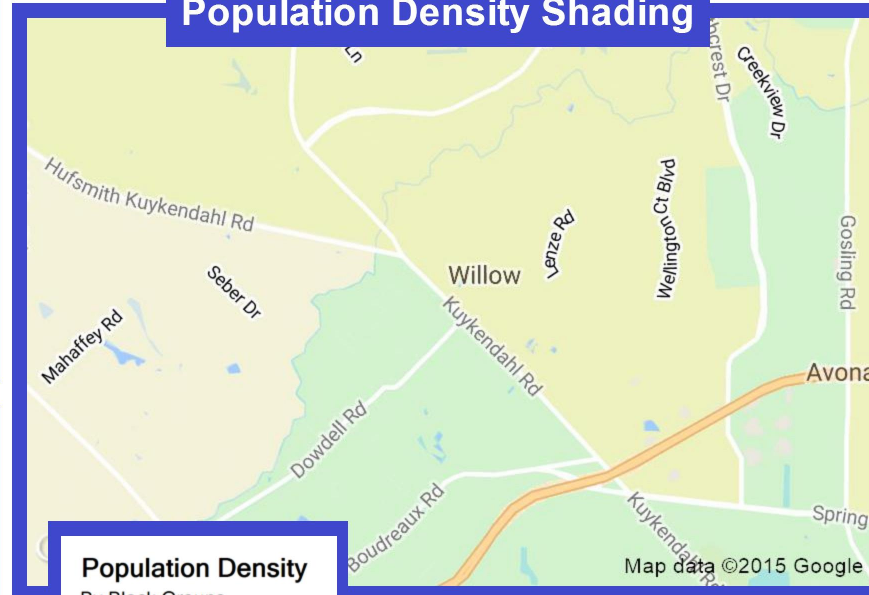
Aerial - Site View



Aerial - City View



Population Density Shading



Demographic Data

	1 mi radius	3 mi radius	5 mi radius
Population (2017)	4,829	67,962	159,907
Households (2017)	1,601	22,760	56,025
Median household income (2017)	\$92,649	\$105,246	\$96,740
Total Employees	396	9,559	28,159
Total Establishments	42	1,303	3,738

Population Density

By Block Groups

- 7,500 or More
- 5,000 to 7,500
- 2,500 to 5,000
- 1,000 to 2,500
- Less than 1,000

This map was produced using data from private and government sources deemed to be reliable. The information herein is provided without representation or warranty.

FULL PROFILE

2000-2010 Census, 2017 Estimates with 2022 Projections

Calculated using Weighted Block Centroid from Block Groups

Lat/Lon: 30.0999/-95.5411

RF1

Kuykendahl Rd & Willow Forest Dr, Tomball, TX 77375

1 mi radius 3 mi radius 5 mi radius

	1 mi radius	3 mi radius	5 mi radius	
POPULATION	2017 Estimated Population	4,829	67,962	159,907
	2022 Projected Population	5,216	73,945	175,858
	2010 Census Population	3,812	40,317	112,660
	2000 Census Population	2,759	17,842	62,329
	Projected Annual Growth 2017 to 2022	1.6%	1.8%	2.0%
	Historical Annual Growth 2000 to 2017	4.4%	16.5%	9.2%
HOUSEHOLDS	2017 Estimated Households	1,601	22,760	56,025
	2022 Projected Households	1,727	24,740	61,464
	2010 Census Households	1,208	13,054	38,582
	2000 Census Households	882	5,820	21,275
	Projected Annual Growth 2017 to 2022	1.6%	1.7%	1.9%
	Historical Annual Growth 2000 to 2017	4.8%	17.1%	9.6%
AGE	2017 Est. Population Under 10 Years	14.6%	15.5%	15.3%
	2017 Est. Population 10 to 19 Years	14.9%	14.0%	14.2%
	2017 Est. Population 20 to 29 Years	12.1%	11.8%	12.0%
	2017 Est. Population 30 to 44 Years	22.1%	24.0%	23.4%
	2017 Est. Population 45 to 59 Years	20.4%	18.9%	19.1%
	2017 Est. Population 60 to 74 Years	12.4%	12.3%	12.2%
	2017 Est. Population 75 Years or Over	3.5%	3.6%	4.0%
	2017 Est. Median Age	35.0	34.5	34.9
MARITAL STATUS & GENDER	2017 Est. Male Population	49.3%	49.0%	48.9%
	2017 Est. Female Population	50.7%	51.0%	51.1%
	2017 Est. Never Married	27.7%	22.4%	23.6%
	2017 Est. Now Married	61.1%	64.3%	59.1%
	2017 Est. Separated or Divorced	9.6%	10.9%	14.2%
	2017 Est. Widowed	1.7%	2.3%	3.1%
INCOME	2017 Est. HH Income \$200,000 or More	12.0%	17.1%	15.1%
	2017 Est. HH Income \$150,000 to \$199,999	6.3%	11.5%	9.8%
	2017 Est. HH Income \$100,000 to \$149,999	22.3%	22.8%	21.0%
	2017 Est. HH Income \$75,000 to \$99,999	22.5%	13.9%	14.7%
	2017 Est. HH Income \$50,000 to \$74,999	25.2%	14.9%	15.8%
	2017 Est. HH Income \$35,000 to \$49,999	7.1%	7.5%	8.6%
	2017 Est. HH Income \$25,000 to \$34,999	2.1%	4.3%	5.7%
	2017 Est. HH Income \$15,000 to \$24,999	2.0%	3.6%	4.4%
	2017 Est. HH Income Under \$15,000	0.7%	4.4%	4.9%
	2017 Est. Average Household Income	\$106,325	\$127,102	\$118,112
	2017 Est. Median Household Income	\$92,649	\$105,246	\$96,740
	2017 Est. Per Capita Income	\$35,244	\$42,567	\$41,399
	2017 Est. Total Businesses	42	1,303	3,738
2017 Est. Total Employees	396	9,559	28,159	

This report was produced using data from private and government sources deemed to be reliable. The information herein is provided without representation or warranty.

FULL PROFILE

2000-2010 Census, 2017 Estimates with 2022 Projections

Calculated using Weighted Block Centroid from Block Groups

Lat/Lon: 30.0999/-95.5411

RF1

Kuykendahl Rd & Willow Forest Dr, Tomball, TX 77375				
		1 mi radius	3 mi radius	5 mi radius
RACE	2017 Est. White	77.4%	75.0%	74.1%
	2017 Est. Black	7.5%	7.8%	8.4%
	2017 Est. Asian or Pacific Islander	3.9%	5.9%	6.6%
	2017 Est. American Indian or Alaska Native	0.9%	0.6%	0.5%
	2017 Est. Other Races	10.3%	10.7%	10.4%
HISPANIC	2017 Est. Hispanic Population	1,189	15,503	36,499
	2017 Est. Hispanic Population	24.6%	22.8%	22.8%
	2022 Proj. Hispanic Population	26.9%	25.0%	24.8%
	2010 Hispanic Population	23.5%	21.0%	19.9%
EDUCATION (Adults 25 or Older)	2017 Est. Adult Population (25 Years or Over)	3,126	44,490	104,348
	2017 Est. Elementary (Grade Level 0 to 8)	5.4%	2.8%	3.1%
	2017 Est. Some High School (Grade Level 9 to 11)	7.9%	3.9%	4.0%
	2017 Est. High School Graduate	23.0%	20.6%	20.8%
	2017 Est. Some College	22.0%	21.3%	22.6%
	2017 Est. Associate Degree Only	5.9%	6.8%	7.3%
	2017 Est. Bachelor Degree Only	24.2%	30.5%	28.0%
	2017 Est. Graduate Degree	11.6%	14.0%	14.3%
HOUSING	2017 Est. Total Housing Units	1,658	23,480	57,677
	2017 Est. Owner-Occupied	85.0%	83.6%	76.8%
	2017 Est. Renter-Occupied	11.6%	13.3%	20.3%
	2017 Est. Vacant Housing	3.5%	3.1%	2.9%
HOMES BUILT BY YEAR	2010 Homes Built 2005 or later	2.2%	4.7%	3.1%
	2010 Homes Built 2000 to 2004	40.9%	80.5%	57.6%
	2010 Homes Built 1990 to 1999	26.9%	26.4%	20.8%
	2010 Homes Built 1980 to 1989	13.1%	11.8%	21.6%
	2010 Homes Built 1970 to 1979	29.9%	18.3%	17.8%
	2010 Homes Built 1960 to 1969	9.2%	8.2%	5.4%
	2010 Homes Built 1950 to 1959	1.5%	2.7%	2.0%
	2010 Homes Built Before 1949	0.8%	2.3%	1.8%
HOME VALUES	2010 Home Value \$1,000,000 or More	1.5%	2.2%	1.6%
	2010 Home Value \$500,000 to \$999,999	11.7%	14.9%	11.0%
	2010 Home Value \$400,000 to \$499,999	3.8%	11.0%	8.0%
	2010 Home Value \$300,000 to \$399,999	8.6%	18.8%	15.0%
	2010 Home Value \$200,000 to \$299,999	12.8%	36.7%	29.1%
	2010 Home Value \$150,000 to \$199,999	23.9%	38.5%	29.3%
	2010 Home Value \$100,000 to \$149,999	39.1%	30.4%	30.0%
	2010 Home Value \$50,000 to \$99,999	18.7%	12.6%	12.3%
	2010 Home Value \$25,000 to \$49,999	5.3%	3.9%	2.6%
	2010 Home Value Under \$25,000	5.5%	4.9%	3.2%
	2010 Median Home Value	\$154,201	\$202,644	\$196,662
	2010 Median Rent	\$1,353	\$1,412	\$1,112

This report was produced using data from private and government sources deemed to be reliable. The information herein is provided without representation or warranty.

FULL PROFILE

2000-2010 Census, 2017 Estimates with 2022 Projections

Calculated using Weighted Block Centroid from Block Groups

Lat/Lon: 30.0999/-95.5411

RF1

Kuykendahl Rd & Willow Forest Dr, Tomball, TX 77375

1 mi radius 3 mi radius 5 mi radius

		1 mi radius	3 mi radius	5 mi radius
LABOR FORCE	2017 Est. Labor Population Age 16 Years or Over	3,677	51,289	121,004
	2017 Est. Civilian Employed	67.5%	66.7%	66.2%
	2017 Est. Civilian Unemployed	1.6%	2.3%	2.3%
	2017 Est. in Armed Forces	-	-	-
	2017 Est. not in Labor Force	30.8%	30.9%	31.4%
	2017 Labor Force Males	48.7%	48.5%	48.1%
	2017 Labor Force Females	51.3%	51.5%	51.9%
OCCUPATION	2010 Occupation: Population Age 16 Years or Over	2,482	35,553	79,739
	2010 Mgmt, Business, & Financial Operations	21.5%	22.8%	22.0%
	2010 Professional, Related	16.2%	23.0%	24.1%
	2010 Service	18.8%	11.2%	11.9%
	2010 Sales, Office	25.9%	26.6%	26.1%
	2010 Farming, Fishing, Forestry	-	-	0.1%
	2010 Construction, Extraction, Maintenance	10.3%	7.3%	6.9%
	2010 Production, Transport, Material Moving	7.2%	9.0%	9.0%
	2010 White Collar Workers	63.6%	72.5%	72.1%
	2010 Blue Collar Workers	36.4%	27.5%	27.9%
	TRANSPORTATION TO WORK	2010 Drive to Work Alone	81.2%	85.1%
2010 Drive to Work in Carpool		10.1%	6.4%	7.5%
2010 Travel to Work by Public Transportation		4.3%	1.2%	1.4%
2010 Drive to Work on Motorcycle		-	-	0.1%
2010 Walk or Bicycle to Work		0.4%	0.7%	1.0%
2010 Other Means		0.3%	0.8%	0.9%
2010 Work at Home		3.7%	5.7%	4.8%
TRAVEL TIME		2010 Travel to Work in 14 Minutes or Less	12.8%	12.6%
	2010 Travel to Work in 15 to 29 Minutes	29.4%	28.9%	30.6%
	2010 Travel to Work in 30 to 59 Minutes	41.0%	42.5%	39.9%
	2010 Travel to Work in 60 Minutes or More	20.7%	19.7%	18.0%
	2010 Average Travel Time to Work	32.0	31.7	30.5
CONSUMER EXPENDITURE	2017 Est. Total Household Expenditure	\$118 M	\$1.89 B	\$4.42 B
	2017 Est. Apparel	\$4.17 M	\$66.9 M	\$156 M
	2017 Est. Contributions, Gifts	\$8.63 M	\$149 M	\$342 M
	2017 Est. Education, Reading	\$4.96 M	\$86.0 M	\$196 M
	2017 Est. Entertainment	\$6.74 M	\$108 M	\$252 M
	2017 Est. Food, Beverages, Tobacco	\$17.6 M	\$275 M	\$649 M
	2017 Est. Furnishings, Equipment	\$4.26 M	\$68.1 M	\$158 M
	2017 Est. Health Care, Insurance	\$9.80 M	\$155 M	\$366 M
	2017 Est. Household Operations, Shelter, Utilities	\$36.3 M	\$583 M	\$1.36 B
	2017 Est. Miscellaneous Expenses	\$1.69 M	\$26.5 M	\$62.4 M
	2017 Est. Personal Care	\$1.53 M	\$24.2 M	\$56.8 M
	2017 Est. Transportation	\$22.4 M	\$346 M	\$814 M

This report was produced using data from private and government sources deemed to be reliable. The information herein is provided without representation or warranty.

